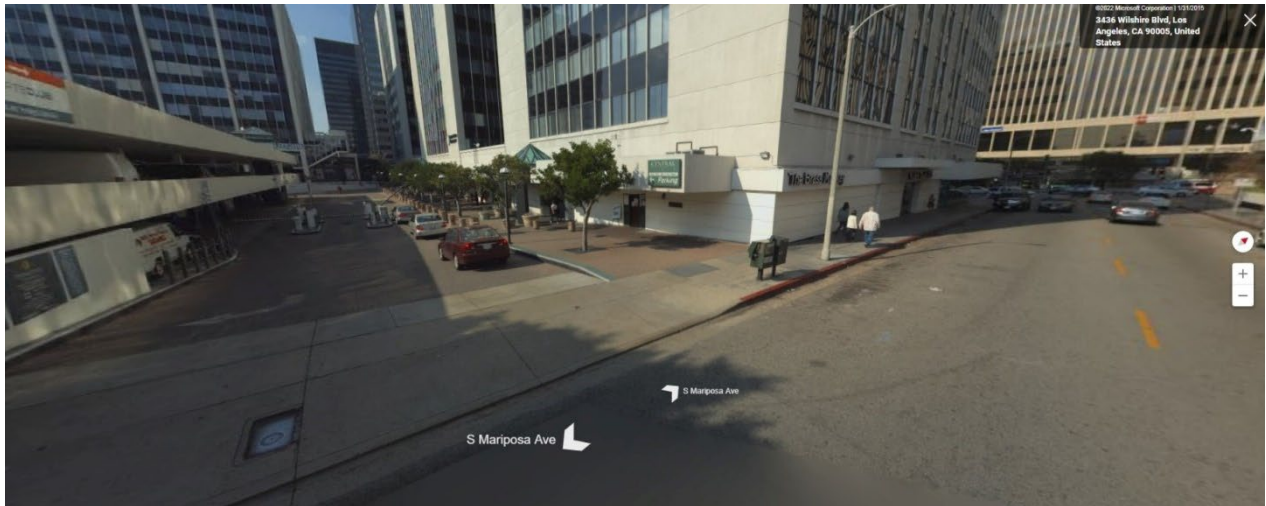


# Alternative Parking for ZCLA

No parking onsite. For local commuting members, there are two options for parking: find a spot in the neighborhood OR use the public parking structure below.



The parking structure is located at 3440/3470 Wilshire Blvd. Please note: The entrance is left off South Mariposa Ave. Look for the green “Central Plaza Parking” sign. If you reach Wilshire Boulevard, you’ve gone too far. This is an automated facility, open twenty-four hours a day, seven days a week. Lost tickets pay maximum. No in and out privileges. If you have any complications, call security at (213) 465-4847.

When you turn left into the parking structure, take a ticket and continue to park.

## **Lot fees are:**

Incremental (each 15 minutes): \$3.00

Weekend Special (all day, Saturday & Sunday): \$5.00

Night Rate: \$5.00

When you park, you may exit out onto 7<sup>th</sup> Street. Continue across the street until you reach Normandie Avenue. Turn left and continue straight for two blocks until you reach the Zen Center.

